

**TOYO TIRES**<sup>®</sup>

**M655**<sup>™</sup>



## ON/OFF-ROAD ALL-TERRAIN LIGHT TRUCK COMMERCIAL GRADE TIRE

Built tough for severe service applications, the M655 commercial grade light truck tires provide confident traction under heavy loads for mining, energy, agriculture, construction, and forestry use.



### ALL-WEATHER TREAD DESIGN

- >> A wide contact patch provides traction and even wear.
- >> Deep tread improves traction and provides long wear.
- >> Three-Peak Mountain Snowflake confirms its performance in snow and on ice.
- >> Waved sipes enhance all-weather traction.
- >> Pinned to accept TSMI #15 studs.



### SPECIALIZED CAP AND BASE COMPOUND

- >> Delivers long tread life.
- >> Protects from cuts and chips.



### THICK AND STURDY SIDEWALL

- >> Extra buttress protects the sidewall from cuts and abrasions.




### MAXIMUM REMOVAL MILES

- >> E-balance profile minimizes the growth of the tread profile and maintains uniformity.
- >> Saddle notch and stone ejectors protect the casing and reinforce the tread blocks.



# Technical Data

"Millennium" warranty:  
- 5 year workmanship and materials warranty.

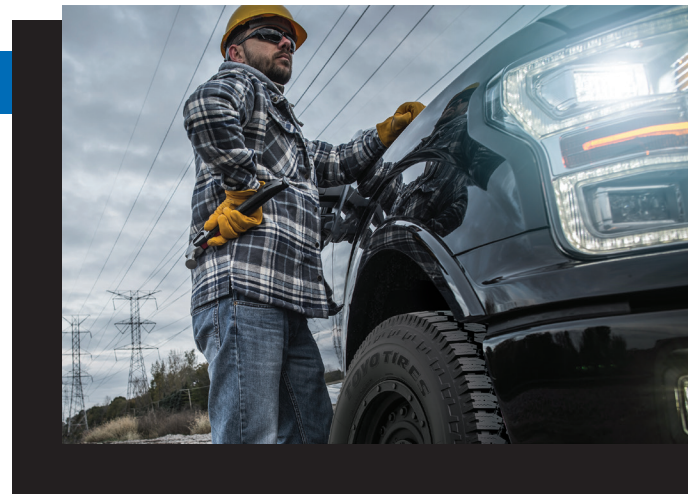
													
SIZE	LI	SW	CODE		PLY	1/32" OD	OW	SLR	RPK	RIM WIDTHS			
17	LT235/80R17	120/117Q	BL	556730		10-E	19	32.0	9.3	14.9	403	6.5	6.0-8.0
	LT245/75R17	121/118Q	BL	556720		10-E	19	31.9	9.7	14.8	405	7.0	6.5-8.0
	LT245/70R17	119/116Q	BL	556780		10-E	19	30.8	9.7	14.3	419	7.0	6.5-8.0
	LT265/70R17	123/120Q	BL	556830		10-E	19	32.0	10.6	14.9	403	8.0	7.0-9.0
	LT285/70R17	126/123Q	BL	556710		10-E	19	33.1	11.6	15.4	390	8.5	7.5-9.5
18	LT265/70R18	124/121Q	BL	556750		10-E	19	33.0	10.6	15.4	391	8.0	7.0-9.0
	LT275/70R18	125/122Q	BL	556740		10-E	19	33.6	10.9	15.6	384	8.0	7.0-9.0
	LT295/70R18	129/126Q	BL	556760		10-E	19	34.6	11.7	16.1	373	8.5	7.5-10.0
	LT275/65R18	123/120Q	BL	556770		10-E	19	32.4	10.7	15.1	398	8.0	8.0-9.5

Pinned to accept TSMI #15 studs.

*It has a sturdy sidewall, a cut-and-chip-resistant cap compound, and a heat-resistant base compound that withstands stresses under load in off-road driving conditions.*



*A deep tread and flat crown radius to reduce the risk of irregular wear, while the groove and notch design protect the casing from stone damage.*



## Transport Canada Approved for Severe Winter Conditions

Transport Canada in conjunction with the Rubber Association of Canada and the Tire Manufacturer's Association in the USA have introduced a performance standard requirement for snow tires. This standard was developed to help consumers distinguish between an "all season" tire (represented by the symbol "M+S") and tires specifically designed for use in severe winter conditions. Tires now meeting this standard will display a mountain/snowflake pictograph on the sidewall in addition to the M+S symbol.



Tire data subject to change. Visit [toyotires.ca](http://toyotires.ca) for current data.