

"Millennium" warranty:
 - Limited treadwear warranty
 - "P-Metric" & "Euro-Metric" - 112,000 km
 - "LT sizes" - 80,000 km
 - 5 year workmanship and materials.

Improved all season traction, wet braking and wear life over its predecessor makes the open Country H/T II and ideal choice for drivers looking for that little bit more from their light truck or SUV tire.

SIZE	LI	SW	CODE	UTQG	1/32"	OD	OW	SLR	RPK	RIM WIDTHS			
15	235/75R15	XL	109T	OWL	364720	740A B	12	28.9	9.3	12.9	447	6.5	6.0-8.0
	245/75R16		111T	OWL	364700	740A B	12	30.5	9.8	13.7	424	7.0	6.5-8.0
	265/75R16		116T	OWL	364730	740A B	12	31.7	10.5	14.1	408	7.5	7.0-9.0
	215/70R16		100H	BL	364500	740A A	11	27.9	8.7	12.6	463	6.5	5.5-7.0
	235/70R16	XL	109T	OWL	364530	740A B	12	29.0	9.4	13.1	446	7.0	6.0-8.0
	245/70R16		107T	OWL	364690	740A B	12	29.5	9.8	13.3	437	7.0	6.5-8.0
16	255/70R16		111T	OWL	364640	740A B	12	--	--	--	--	7.5	6.5-8.5
	265/70R16		112T	BL	364520	740A B	12	30.6	10.7	13.7	421	8.0	7.0-9.0
	265/70R16		112T	OWL	364510	740A B	12	30.6	10.7	13.7	421	8.0	7.0-9.0
	LT215/85R16		115/112S	BL	364290	10-E	14	30.4	8.5	13.6	424	6.0	5.5-7.0
	LT235/85R16		120/116S	OWL	364280	10-E	15	31.7	9.3	14.1	407	6.5	6.0-7.5
	LT225/75R16		115/112S	BL	364250	10-E	14	29.3	8.8	13.2	441	6.0	6.0-7.0
	LT245/75R16		120/116S	OWL	364240	10-E	14	30.5	9.8	13.7	424	7.0	6.5-8.0
	LT265/75R16		123/120S	OWL	364310	10-E	13	31.7	10.5	14.1	408	7.5	7.0-8.0
	LT285/75R16		126/123S	OWL	364410	10-E	16	32.8	11.3	14.6	393	8.0	7.5-9.0
	235/75R17		109T	OWL	364660	740A B	12	30.9	9.3	13.9	418	6.5	6.0-8.0
17	235/70R17	XL	109T	OWL	364710	740A B	12	30.0	9.4	13.6	430	7.0	6.0-8.0
	245/70R17		110T	OWL	364540	740A B	12	30.6	9.8	13.8	423	7.0	6.5-8.0
	255/70R17		112T	OWL	364600	740A B	12	31.1	10.2	14.0	415	7.5	6.5-8.5
	265/70R17		115T	BL	364430	740A B	12	31.7	10.7	14.2	408	8.0	7.0-9.0
	265/70R17		115T	OWL	364440	740A B	12	31.7	10.7	14.2	408	8.0	7.0-9.0
	225/65R17		102H	BL	364450	740A A	11	28.5	9.0	13.0	453	6.5	6.0-8.0
	235/65R17		104T	BL	364460	740A B	12	29.1	9.4	13.2	444	7.0	6.5-8.5
	245/65R17		107H	BL	364490	740A A	12	29.5	9.8	13.4	437	7.0	7.0-8.5
	255/65R17		110T	OWL	364630	740A B	12	30.1	10.2	13.6	429	7.5	7.0-9.0
	265/65R17		112T	OWL	364550	740A B	12	30.6	10.7	13.8	423	8.0	7.5-9.5
	LT235/80R17		120/117S	BL	364300	10-E	14	31.8	9.3	14.3	406	6.5	6.0-7.5
	LT245/75R17		121/118S	BL	364220	10-E	14	31.5	9.8	14.1	410	7.0	6.5-7.5
	LT245/75R17		121/118S	OWL	364230	10-E	14	31.5	9.8	14.1	410	7.0	6.5-7.5
	LT245/70R17		119/116S	OWL	364340	10-E	14	30.6	9.8	13.8	423	7.0	6.5-8.0
18	LT265/70R17		121/118S	BL	364270	10-E	14	31.7	10.7	14.2	408	8.0	7.0-8.5
	LT265/70R17		121/118S	OWL	364260	10-E	15	31.7	10.7	14.2	408	8.0	7.0-8.5
	LT285/70R17		121/118S	OWL	364360	10-E	16	32.8	11.5	14.6	394	8.5	7.5-9.0
	255/70R18		113S	BL	364740	740A B	12	32.1	10.2	14.5	402	7.5	6.5-8.5
	265/70R18		116T	BL	364620	740A B	12	32.6	10.7	14.7	395	8.0	7.0-9.0
	255/65R18		111T	BL	364570	740A B	12	31.1	10.2	14.1	416	7.5	7.0-9.0
	265/65R18		114T	BL	364610	740A B	12	31.5	10.7	14.3	409	8.0	7.5-9.5
	275/65R18		116T	BL	364470	740A B	12	32.1	11.0	14.5	402	8.0	7.5-9.5
	265/60R18		110T	BL	364560	740A B	12	30.5	10.7	13.9	423	8.0	7.5-9.5
	285/60R18	XL	120V	BL	364750	740A A	11	31.5	11.5	14.3	410	8.5	8.0-10.0
20	LT275/70R18		125/122S	BL	364330	10-E	15	33.2	11.0	14.9	389	8.0	7.0-8.5
	LT255/65R18		120/117R	BL	364420	10-E	14	31.1	10.2	14.1	416	7.5	7.0-9.0
	LT275/65R18		123/120S	BL	364320	10-E	15	32.1	11.0	14.5	402	8.0	7.5-9.0
	275/60R20		115T	BL	364680	740A B	12	33.0	11.0	15.1	391	8.0	7.5-9.5
	255/55R20	XL	110H	BL	364650	740A A	11	31.0	10.4	14.3	416	8.0	7.0-9.0
	275/55R20	XL	117H	BL	364480	740A A	11	31.9	11.2	14.6	405	8.5	7.5-9.5
21	255/50R20	XL	109H	BL	364670	740A A	11	30.1	10.4	13.9	429	8.0	7.0-9.0
	265/50R20		107T	BL	364580	740A B	12	30.5	10.9	14.1	424	8.5	7.5-9.5
	285/50R20		112V	BL	364760	740A A	11	31.3	11.7	14.4	413	9.0	8.0-10.0
	LT275/65R20		126/123S	BL	364390	10-E	15	34.1	11.0	15.5	378	8.0	7.5-9.5
	LT285/65R20		127/124R	BL	364400	10-E	16	34.6	11.5	15.7	373	8.5	8.0-10.0
	LT265/60R20		121/118S	BL	364370	10-E	14	32.5	10.7	14.9	397	8.0	7.5-9.5
	LT275/60R20		123/120R	BL	364350	10-E	14	33.0	11.0	15.1	391	8.0	7.5-9.5
	LT285/60R20		125/122R	BL	364380	10-E	16	33.5	11.5	15.2	386	8.5	8.0-10.0
22	275/50R21	XL	113V	BL	364780	740A A	11	31.9	11.2	14.7	405	8.5	7.5-9.5
	275/50R22		111H	BL	364770	740A A	11	32.9	11.2	15.2	393	8.5	7.5-9.5
	285/45R22	XL	114H	BL	364590	740A A	11	32.1	11.2	14.9	402	9.5	9.0-10.5

XL = Extra Load/XL



OPEN COUNTRY® H/T II
 Designed for ride comfort without compromising durability.



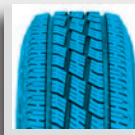
▶ **OPEN COUNTRY® H/T II**

All season light truck highway tire

Designed for ride comfort without compromising durability. Great on-road performance is what sets this tire apart with added handling during city driving and stability while on the highway. Added durability and traction for that off-road trek, or when on the job site getting things done, makes this a very versatile tire.

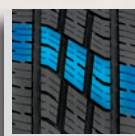
The Open Country H/T II is available in a wide range of sizes and offers an upgraded ride quality and versatile look for your light truck, SUV, or crossover vehicle.

Features & Benefits



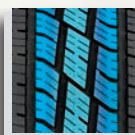
SYMMETRIC, NON-DIRECTIONAL TREAD DESIGN ●●●●●●●●●●

- >> Enables easier rotations in turn helping to reduce irregular wear.
- >> Improves all season traction and tire life.



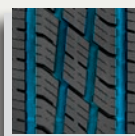
VARIABLE PITCH TREAD DESIGN ●●●●●●●●●●

- >> Varying the angles and position of the tread blocks reduces road noise for a more comfortable ride.



OPTIMIZED CENTER BLOCK ARRANGEMENT ●●●●●●●●●●

- >> A 3-rib design provides increased dry and wet traction while improving highway stability.
- >> An optimized design also reduces road noise for a more comfortable ride.

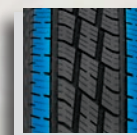


FOUR WIDE CIRCUMFERENTIAL GROOVES ●●●●●●●●●●

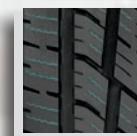
- >> Improves water and slush evacuation for better all season traction.
- >> Wider grooves also increase off-road traction for better grip in mud or sand.



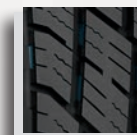
- **LARGER INTERLOCKING OUTER BLOCKS**
 - >> Helps propel the vehicle through mud, slush or snow.
 - >> Adds stability when cornering and braking.
 - >> Interlocking the blocks increases rigidity improving handling capabilities.
 - >> Locking the blocks reduces deformation which causes irregular wear for longer tread life and ride comfort.



- **MULTI-WAVE SIPES**
 - >> Improves the wear life of the tire by minimize irregular wear for a smoother, quieter ride.
 - >> Full depth sipes add edge grip and increases all season traction for the life of the tire.



- **GROOVE DIMPLES – TAPERED SHOULDER SLITS**
 - >> Dimples in the tire grooves and tapered slits in the sidewall expand as the tire wears helping to maintain good wet performance throughout the tire's life.



- **DUAL BUTTRESS & SIDEWALL DESIGN**
 - >> Allows the driver to choose their preferred look from conservative to a more aggressive buttress design.
 - >> The sidewall design also helps improve traction in deep mud slush or snow.



DURABLE CONSTRUCTION

- >> A two-ply carcass and high hardness bead filler improves ride stability and handling.
- >> While a jointless cap ply and two steel belts helps to improve overall endurance and uniformity of the tire.
- >> A rim protector helps protect expensive rims from curb or pothole damage.

